



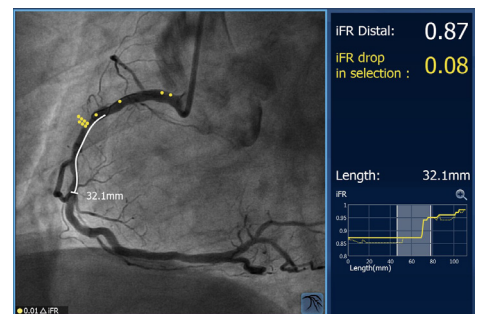
**PHILIPS**

SyncVision

## Making the difference with Live Image Guidance

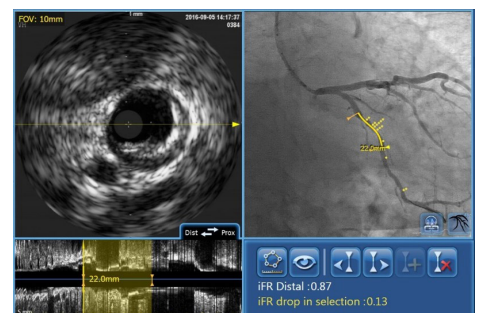
### iFR Co-registration

Provides localization of physiology measurements on the angiogram during the decide and confirm stages of a PCI procedure.



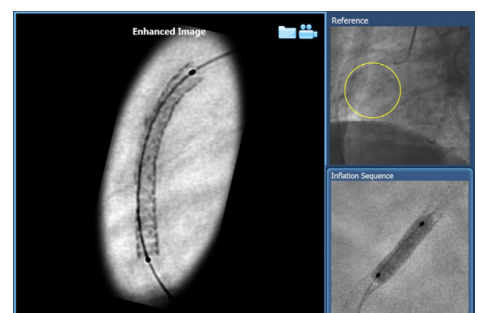
### IVUS Co-registration

Provides localization of the IVUS image on the angiogram during the decide, guide and confirm stages of a PCI procedure. It can additionally be synchronized with physiology measurements, providing a Tri-Registration that shows together the localization of IVUS and physiology on the angiogram image.



### Angio+ Enhanced Angiography

Enhancements and quantification of angiographic images during the decide, guide and confirm stages of a PCI procedure.



# An innovative suite of PCI applications

At Philips, we are committed to delivering technology that makes a difference – to clinical workflows, medical procedures, and to patients' and clinicians' lives. Our portfolio of Live Image Guidance solutions integrates imaging technologies and real-time patient information to help you decide, guide and confirm the right therapy for your patient.

## Key features and benefits

- Intuitive user interface
- Physiology Co-registration
- IVUS Co-registration
- Physiology-IVUS Tri-registration
- Angio+ enhanced angiography featuring Vessel Enhancement, Quantitative Coronary Analysis and Device Detection
- Seamless integration into your PCI workflow

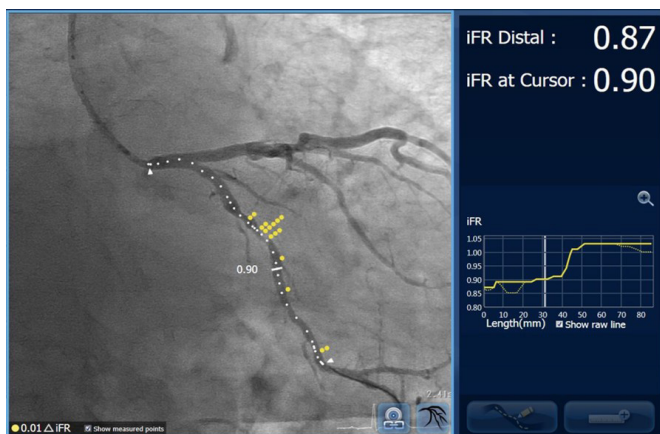
Live Image Guidance includes dedicated solutions that help you increase the efficiency of percutaneous coronary interventions (PCI) – in both the diagnostic and therapeutic phase. Philips solutions offer reliable guidance that helps you make informed decisions and enhance clinical workflow.

## A new perspective

One of our innovative PCI suite application is SyncVision, a comprehensive solution designed to address imaging and physiological challenges in the cath lab. SyncVision allows you to plan your PCI strategy providing guidance and mapping of intravascular ultrasound and physiological information into the angiogram. Moreover, it helps to streamline lesion assessment, simplify vessel sizing, and support precise therapy delivery.





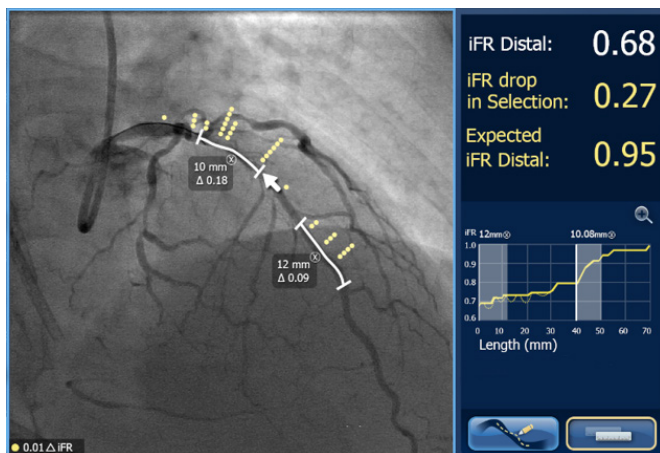


### Physiology Co-registration

iFR and FFR Co-Registration will move physiology from justification to physiological guidance.

#### Benefits

Provides mapping of physiology information into the anatomy image. Allows length measurements to be made on the angiogram. Seamless integration into your PCI workflow.



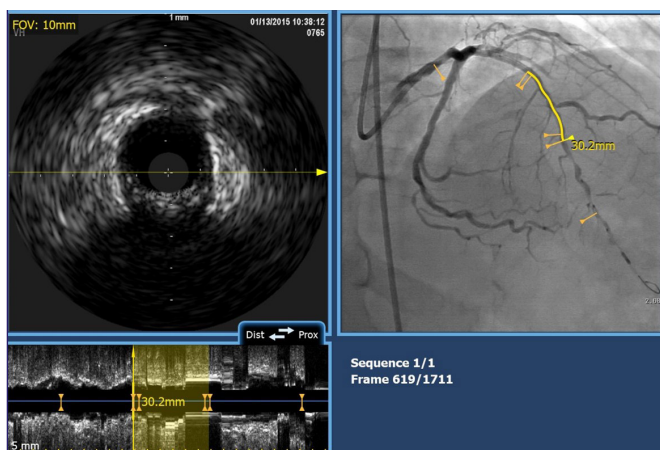
### IVUS Co-registration

This feature provides co-registration between angiographic images and IVUS images.

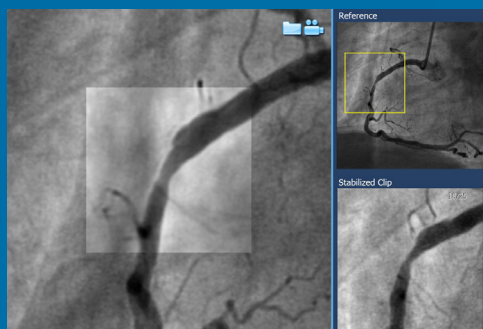
It is designed to help reduce the risk of geographic miss. It makes it easier to confirm your 'healthy-to-healthy' landing zones, stent length and diameter. This feature is only compatible with Eagle Eye Platinum IVUS catheters.

#### Benefits

Localization of the IVUS image on the angiogram. Easy length and area measurements with manual IVUS catheter pullback, aiding accurate stent and size selection. Seamless integration into your PCI workflow.



# Angio+

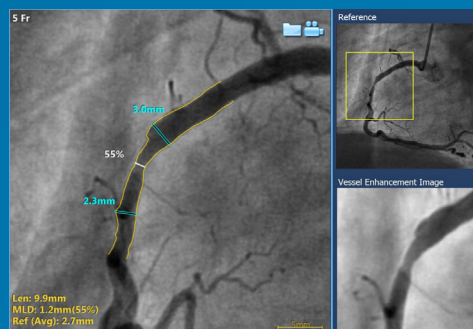


## Vessel Enhancement

This tool will provide more clarity and enhanced image when visualizing the vessel.

### Benefits

- Single-click enhancement of vessel and the lesion anatomy.
- This may reduce the number of required views during the stages of PCI, and may help to identify tortuous or overlapping vessels during complex procedures (Bifurcations, LM, CTO).

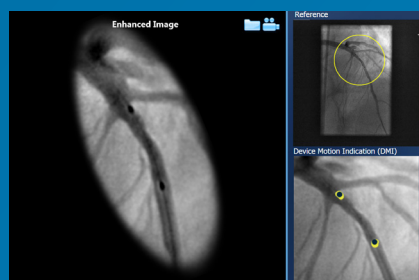


## Quantitative Coronary Analysis (QCA)

This feature enables the calculation of an advanced QCA and vessel enhancement, just with one click on the vessel.

### Benefits

- Single-click QCA analysis of the selected vessel or lesion, including bifurcations. QCA includes: lumen dimension calculation, proximal and distal diameter vessel calculation, % of stenosis calculation.
- “Virtual stent” calculation: it provides the length measurements between the proximal and distal references selected



## Device positioning



## Device inflation



## Device enhancement

### Device Detection

During live X-ray, in both fluoro and cine modes, this feature automatically and continuously generates a live, stabilized and enhanced image of stents and bioresorbable vascular scaffolds, during device positioning, balloon inflation and deployment of the device.

For more information on SyncVision please contact your Philips representative.